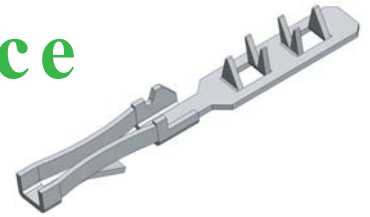


High Insertion Force Female Contact



Designed for Crimping to Membrane Switches, Flexible Circuits, Jumper Cables, Sensors, Textile Ribbons etc

Suitable for use with MH Series Housings/Wafers

High Retention for High Vibration Applications (For 2-10 Ways)

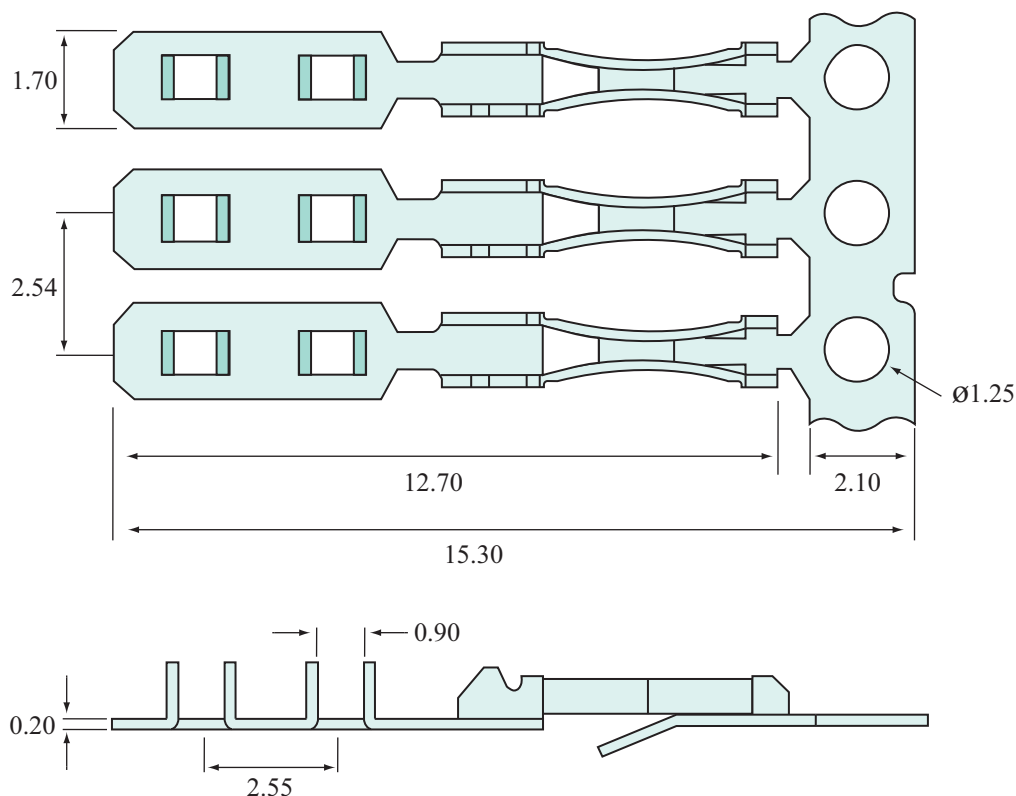
2.54mm Pitch, Phosphor Bronze

Tin and Gold Plating as Standard, Others Available Upon Request

Contact your Local Office for Application/ Crimping Equipment

Low Force Contact MLFC506 & High Flex Contact MHFFC106 also available

RoHS Compliant, Lead Free



Unit : mm

| Part Number | Description | Plating | Reel Quantity |
|--|-----------------------------|----------------|---------------|
| MHFC025-T35 | High Insertion Force Female | Tin | 35,000 |
| MHFC025-SG35 | High Insertion Force Female | Selective Gold | 35,000 |
| MHFC025-G35 | High Insertion Force Female | Gold | 35,000 |
| OTHER PLATING AND REEL SIZES AVAILABLE ON REQUEST | | | |

MEMCON Limited

Compass House Vision Park Chivers Way HISTON
Cambridge CB24 9AD United Kingdom
T +44 1223 257724 F +44 1223 257800
www.memcon.eu sales@memcon.eu

MEMCON (Asia) Limited

Level 7 Parkview Centre
7 Lau Li Street Causeway Bay Hong Kong
T +852 3741 1411 F +852 3747 8980
www.memcon.asia sales@memcon.asia